



# Lenzlinger

## Access Floors

Project planning - Production - Installation



Modern workplaces  
stand on raised floors

Lenzlinger  
Doppelböden

Lenzlinger Söhne AG  
CH-8610 Uster [www.lenzlinger.ch](http://www.lenzlinger.ch)

## Number 1 on the Swiss market

Raised access floors have a long tradition with us, because we have been enthusiastically developing, manufacturing and installing them since 1960. Our strong position is broadly based. This includes our many years of experience, our proximity to customers thanks to branches in German- and French-speaking Switzerland, our long-term way of thinking and acting and, above all, our own production. Whether technical construction with tricky challenges, exclusivity for the entrance hall or a renovation solution during on-going operations: together with you, we work out the optimal solution, create something unique and help to turn your ideas into reality.

## Our services

Raised access floor are more than ever an important component in today's office and industrial buildings with the most diverse requirements. That's why Lenzlinger Access Floors is the right partner.

- LS Consulting and project planning**  
Expert sales consultants support you in the planning, project management and tendering of access flooring systems in accordance with the requirements of robustness, flexibility, ecology and economy.
- LS Continuous product innovations**  
We have our finger on the pulse of the market and are constantly developing innovative products for raised floors such as smartpanel, thermoplate and design coverings.
- LS EN 12825 certified**  
Our production plant is quality certified on the basis of EN 12825. A factory production control with external monitoring ensures the quality of all our manufactured raised floor components.
- LS Project management**  
Customer projects are handled efficiently and professionally by competent project managers. In this way, we guarantee an optimal project process as well as adherence to the schedule and budget.

## In safe hands from the start

Our solutions are uncompromisingly based on your needs. Thanks to our professional project management as well as the optimal approach to consulting, planning and implementation, you receive a predictable project sequence as well as adherence to the schedule and budget. Benefit from our services, because we offer advice, product, installation and service from a single source.



## Quality and flexibility thanks to in-house production

We are us – the only Swiss manufacturer of raised access floors! With our modern production plant, in accordance with ecological standards and the comprehensive competence of our employees, we create and install high-quality products that last for decades.



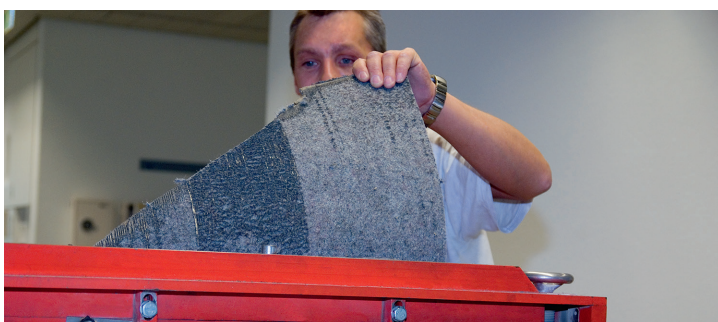
## Powerful and precise installation

Our own certified installation teams ensure perfect execution on site. And thanks to our regional organisational structure with branches in German and French-speaking Switzerland, we are always in a position to carry out large-scale projects on time, even at short notice. We guarantee this added value with precise planning of all capacities, right through to logistics of the highest quality.



## Renovation solutions for raised floors in new splendour

To keep your raised floor looking beautiful, we offer complete renovation solutions for every property – from replacing old floor panels to replacing the entire substructure. If required, we also replace your tiles in small partial areas in furnished rooms. And we do this without interrupting or hindering your daily business routine.



*Depending on your requirements and wishes, we will work with you to plan the optimal process for renovating your raised floor.*

*Either in our factory or directly on site, we remove the old textile covering from the panels. For formats over 600 mm, we use our special machine, which was developed precisely for such conditions.*

## The flexible floor system – professionally realised

It is precisely in inconspicuous details that you recognise that we do not sell products, but complete solutions. Whether in functionality or appearance, we combine both in the highest harmony and quality. Even for creative wishes, we always have the perfect solution, which will certainly meet your requirements.

### Advantages

- ✓ Optimum solutions for every installation height
- ✓ Guaranteed horizontal stability
- ✓ Highest load capacity
- ✓ Subsequent installation of raised floors also possible with low storey heights
- ✓ Solutions for any earthquake requirements
- ✓ Systems for high sound protection requirements

### Substructures – suitable for every room

We offer the right substructure for every room. Whether for low installation heights with low building services installations or systems that must convince with highest load-bearing capacity.



#### **Type 4/5 – The standard**

*The substructure type 4/5 with individual supports is the standard solution for low to normal installation heights. It is suitable for all types of rooms. Also for ventilated and/or air-conditioned substructures, in which there is sufficient hollow space for crossings of various cable runs.*

#### **Type 8 – The strong**

*The substructure type 8 is bolted by means of C-profiles and convinces by highest load-bearing capacity. It is ideal for technical rooms and data centres with a large number of installations.*



## Selection of floor panels

Discover our large selection of floor panels. All raised access floor panels of the same type are interchangeable. Thanks to bevelled edges, they can be easily lifted and reinserted.



**PSF** Wood-based material with aluminium foil



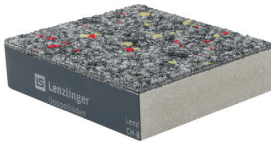
**PSB** Wood-based material with steel sheet



**DSB** Wood-based material thin plate < 30 mm



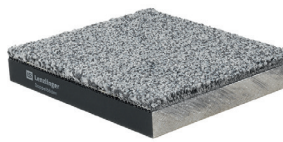
**VSF** Wood-based material with ridge and groove



**PMF** Mineral with aluminium foil



**PMB** Mineral with steel sheet



**DMB** Mineral thin plate < 30 mm



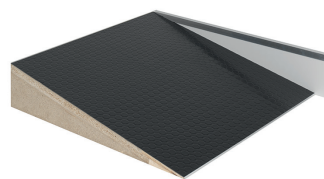
**VMO** Mineral with ridge and groove

## The right accessories are the key

Tailor-made solutions and perfect workmanship are the success factors for raised access floors that are also fully convincing in terms of aesthetics while offering optimum benefits. The diverse, optimally designed accessories for all needs are essential for this, because they increase utility and functionality. We design frame constructions for switch cabinets, bridge level differences and realise convincing terminations, covers and openings for cables and cooled air.



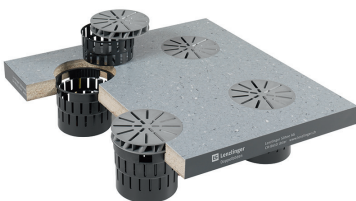
**Base frame, plinth frame**



**Ramp, stairs, front closure**



**Ventilation panels**



**Swirl diffusers**



**Cable diffusers**



**Floor boxes**

## The intelligent raised access floor

With smartpanel, you automatically record and monitor the flow of people in your premises in real time – for more security and efficiency in facility management.

### Decisive advantages

60 years of competence and experience make us reliable experts in the field of raised access floors. In cooperation with our partner, we have developed the **smartpanel by Lenzlinger**: an innovative product – discreet, invisible and compliant with data protection regulations.

### Control and security

At the latest since the Corona crisis, the recording of the flow of people in office buildings, retail or commercial spaces, has become a big issue. Our smartpanel by Lenzlinger combines this control function with the benefits of modern raised access floors. The flow of people is not recorded with cameras, but with the help of state-of-the-art sensors – for maximum control, without any data protection concerns. Suitable measures can be derived from the collected data.

### Lower costs and emissions

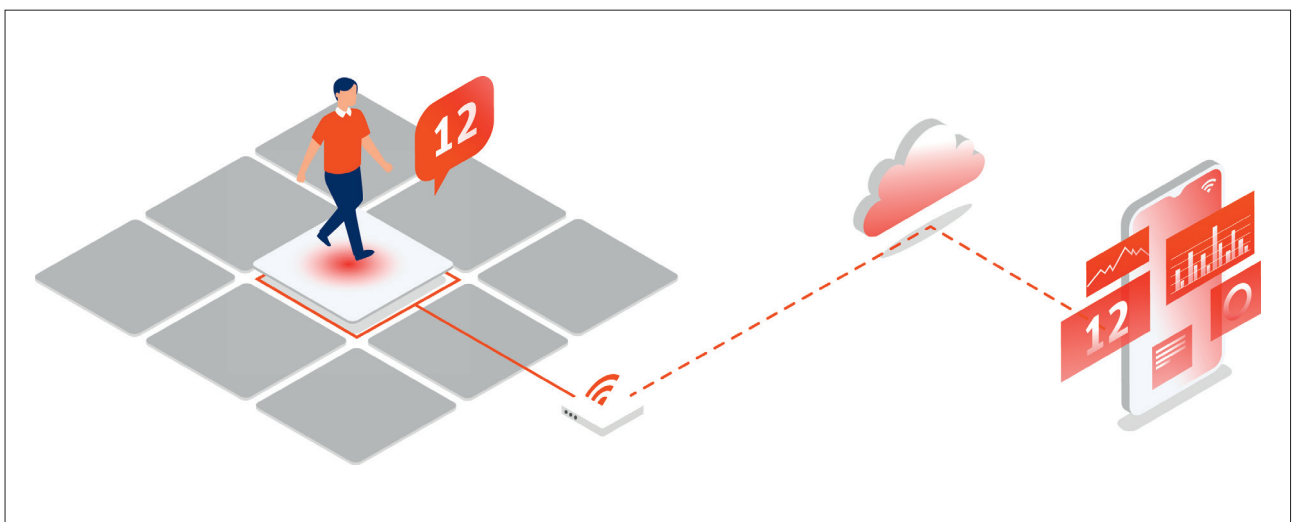
In many cases, empty rooms are constantly heated and lit all day. With the smartpanel by Lenzlinger you can identify unused rooms or zones in your property. This allows you to reduce energy consumption in a targeted manner and save money.

### High flexibility and discretion

The modular design of the smartpanel technology ensures maximum flexibility. The innovative solution consists of conventional raised access floor panels with integrated intelligent sensor technology, each of which is used at entrances and exits. Newly installed as well as existing raised floors can be easily equipped and retrofitted with smartpanel.

### People flow measurement in three steps:

- 1 Integrated pressure sensors detect all movements on the surface of the raised access floor.
- 2 The central receiver records the data and sends it to the cloud via WLAN.
- 3 The recorded data can be viewed and evaluated in real time via app or web browser. If a defined limit value is reached, this triggers a corresponding reaction or warning.



## Composite raised access floor

The Lenzlinger composite raised access floor combines the advantages of a closed floor surface with the flexibility of the raised access floor. This is ideally suited for closed, homogeneous surfaces. Comfort thanks to flexible installation options in a cavity as well as in dry construction.



## Thermo raised access floor

The Thermo raised access floor combines the proven attributes of the Lenzlinger raised access floor with the heating and cooling function by integrating a unique heating register into the raised access floor panel. This means that office areas, training rooms, command rooms etc. can be equipped with underfloor heating. Disturbing radiators and convector covers are eliminated.



## Coverings that fit perfectly into your room

The floor coverings are decisive - both in the aesthetics and in the functional efficiency of a raised access floor. Our diverse coverings for raised access floors cover different areas of application. We distinguish between the following types of coverings:

### Hard coverings

Hard coverings are highly stressable, easy to clean and low maintenance. With additives of graphite or other substances, they achieve good electrostatic properties (conductivity). There are many different designs and colours. Linoleum is a convincing natural product.

### Wood coverings

As a natural product, wood coverings create a special room atmosphere and set individual accents. We offer a wide selection of wood types and installation patterns.

### Textile coverings

Textile coverings have a high robustness and are easy to care for and maintain. If required, they can be supplemented with electrostatic properties (conductivity). The designs and colours of these coverings are very diverse.

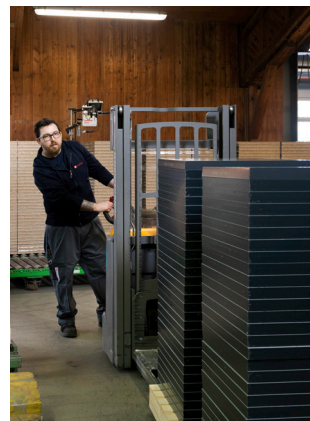
### Design floorings

With our design floorings, you can create your own flooring and thus there are no limits to your desired design! Thanks to the factory application of a surface coating, they still meet all the requirements of a floor covering.



# Lenzlinger

## Access Floors



## The flexible floor system – professionally realised.

Lenzlinger Sons Ltd.  
Access Floors  
Seestrasse 64  
8610 Uster  
Switzerland

+41 58 944 53 53  
edb@lenzlinger.ch  
lenzlinger.ch